

HBS COIL

HBS BOUND SCREWS

QUICK, IN SERIES USE

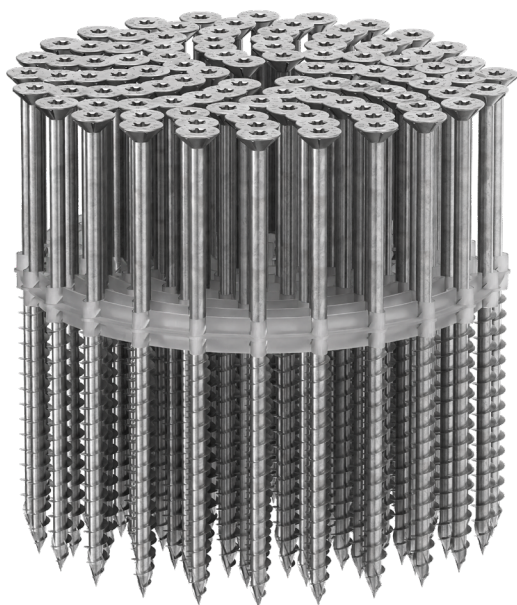
Quick and precise installation. Fast and safe execution thanks to the special binding.

HBS 6,0 mm

Also available in a diameter of 6,0 mm, ideal for quick wall-to-wall fastening in CLT structures.

FAST

With the 3 THORNS tip, screw grip becomes more reliable and faster, while maintaining the usual mechanical performance. More speed, less effort.



DIAMETER [mm]

3 **4** 6 12

LENGTH [mm]

12 **25** 80 1000

SERVICE CLASS

SC1 **SC2**

ATMOSPHERIC CORROSIVITY

C1 **C2**

WOOD CORROSIVITY

T1 **T2**

MATERIAL




electrogalvanized carbon steel




FIELDS OF USE

- timber based panels
- fibreboard, MDF, HDF and LDF
- plated and melamine faced panels
- solid timber
- glulam (Glued Laminated Timber)
- CLT and LVL
- high density woods

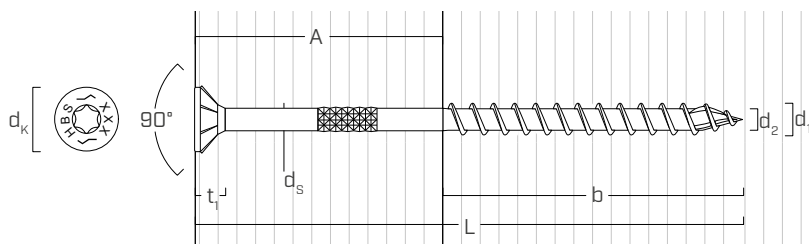
CODES AND DIMENSIONS

| d ₁ [mm] | CODE | L [mm] | b [mm] | A [mm] | pcs/  | pcs |
|------------------------|---------------|-----------|-----------|-----------|--|------|
| 4 TX 20 | HH10600459(*) | 25 | 18 | 7 | - | 3000 |
| | HZB430 | 30 | 16 | 14 | 167 | 3000 |
| | HZB440 | 40 | 24 | 16 | 167 | 2000 |
| | HZB450 | 50 | 30 | 20 | 125 | 1500 |

(*) Full threaded screw.

| d ₁ [mm] | CODE | L [mm] | b [mm] | A [mm] | pcs/  | pcs |
|------------------------|---------|-----------|-----------|-----------|--|------|
| 4,5 TX 20 | HZB4550 | 50 | 30 | 20 | 125 | 1500 |
| 5 TX 25 | HZB560 | 60 | 30 | 30 | 125 | 1250 |
| | HZB570 | 70 | 35 | 35 | 125 | 625 |
| | HZB580 | 80 | 40 | 40 | 125 | 625 |
| 6 TX 30 | HZB670 | 70 | 40 | 30 | 135 | 625 |
| | HZB680 | 80 | 40 | 40 | 135 | 625 |

GEOMETRY | HZB



| Nominal diameter | d ₁ | [mm] | 4 | 4,5 | 5 | 6 |
|---|------------------|------|------|------|-------|-------|
| Head diameter | d _K | [mm] | 8,00 | 9,00 | 10,00 | 12,00 |
| Thread diameter | d ₂ | [mm] | 2,55 | 2,80 | 3,40 | 3,95 |
| Shank diameter | d _S | [mm] | 2,75 | 3,15 | 3,65 | 4,30 |
| Head thickness | t ₁ | [mm] | 2,80 | 2,80 | 3,10 | 4,50 |
| Pre-drilling hole diameter ⁽¹⁾ | d _{V,S} | [mm] | 2,5 | 2,5 | 3,0 | 4,0 |

⁽¹⁾ Pre-drilling valid for softwood.

 For mechanical properties and structural values see HBS on page 30.

ADDITIONAL PRODUCTS

| CODE | description | d ₁ [mm] | lengths [mm] | pcs |
|------------|---|------------------------|-----------------|-----|
| HH3373 | automatic loader for cordless screwdriver A 18 M BL | 4,0 | 25-50 | 1 |
| HH3372 | automatic loader for cordless screwdriver A 18 M BL | 4,5 - 6,0 | 40-80 | 1 |
| HH3352 | powered screwdriver | 4,0 | 25-50 | 1 |
| HH3338 | powered screwdriver | 4,5 - 6,0 | 40-80 | 1 |
| HH14411591 | extension | - | - | 1 |
| HZB6PLATE | adapter plate for HZB Ø6 | - | - | 1 |
| HH14001469 | TX30 M6 bit for HZB Ø6 | - | - | 1 |

Further information on page 401.



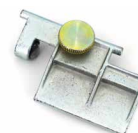
HH3372



HH3338



HH14411591



HZB6PLATE



HH14001469

Ø6 mm HBS COIL APPLICATION

The adapter plates for use of 4,0, 4,5 and 5,0 diameter HBS COIL screws are already supplied with the respective screwdriver loaders. To use HBS COIL screws with a diameter of 6,0, the adapter plates supplied must be replaced with the adapter plate HZB6PLATE. For HBS COIL screws diameter 6,0 it is also necessary to use the appropriate TX30 bit (code HH14001469).

We recommend using the extension HH14411591 for an easier installation of the screws on horizontal planes.